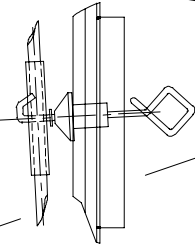
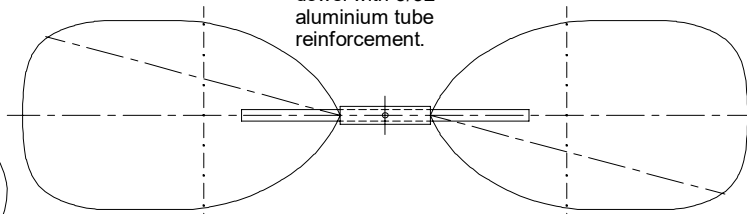


Small Peck thrust-bush assembly, 1/32 wire with brass washer or glass bead; no freewheel.

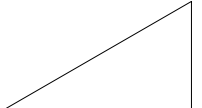


Alternatively, a plastic prop cut down to 4" with the blades scraped to reduce the weight will work Ok.

Prop hub from 1/16" Prob dowel with 3/32" aluminium tube reinforcement.



Blade angle template from scrap sheet



Prop blades cut from Waitrose 300 ml yoghurt pot ~ 3" diameter. Cut blades at 15 degrees to vertical.

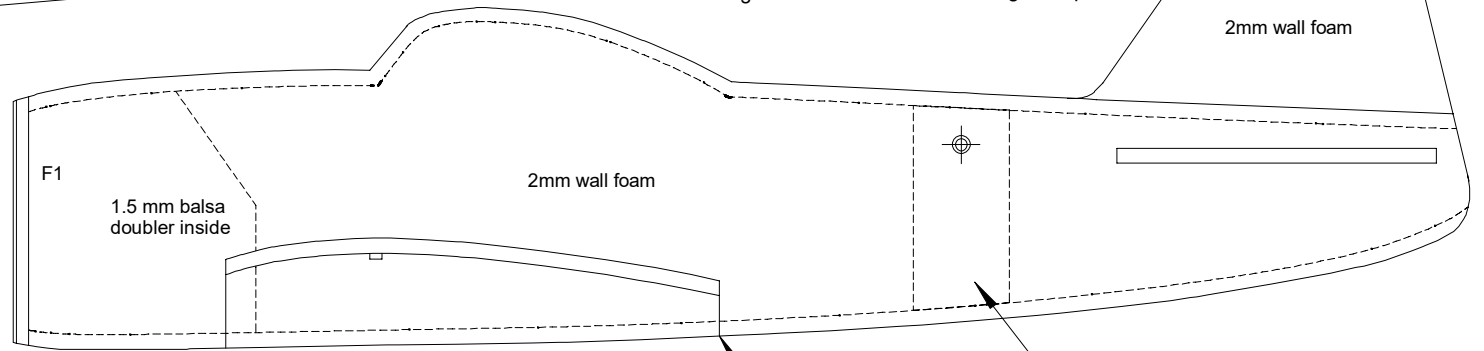
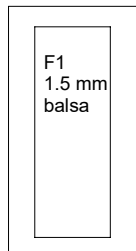
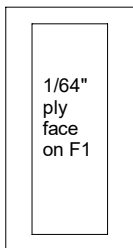
position of blade-angle template

2mm wall foam

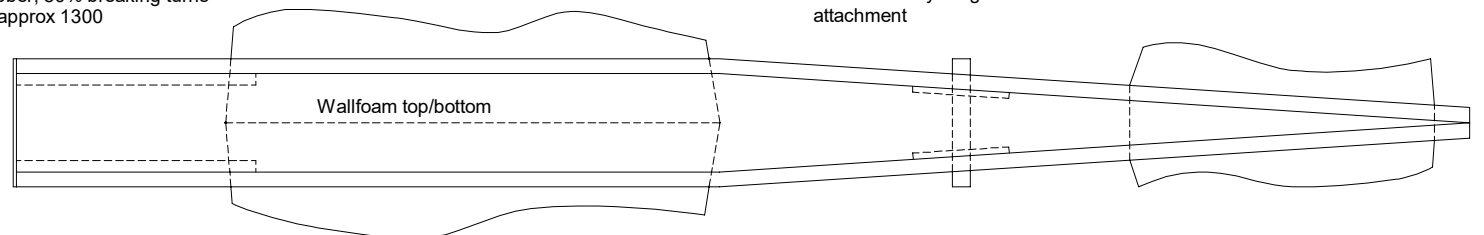
2mm wall foam

100mm

Nose block from 2 x 1/16" sheet and 1/64" ply, with 1/8" sheet plug



Try an 8" loop of 0.055" rubber, 80% breaking turns is approx 1300



# Kawanishi N1K-J "George"

By Andy Blackburn, with acknowledgement to Lionel Haines

100mm